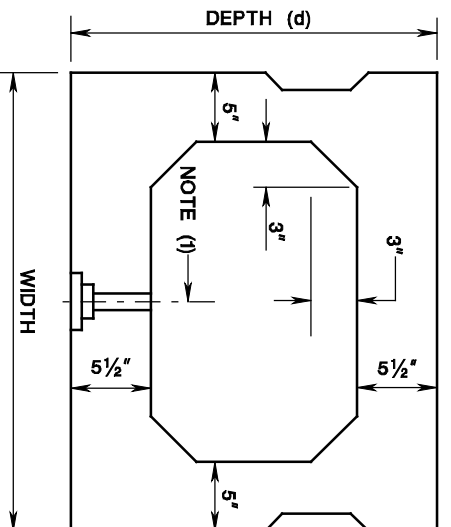


PRESTRESSED CONCRETE BOX BEAMS STANDARD SECTIONS

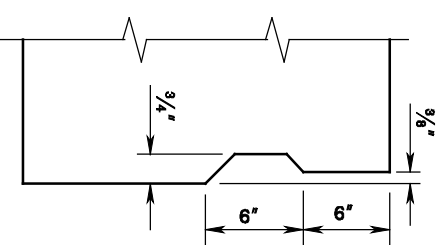
ISSUED: 2009

PLATE
3.10-10

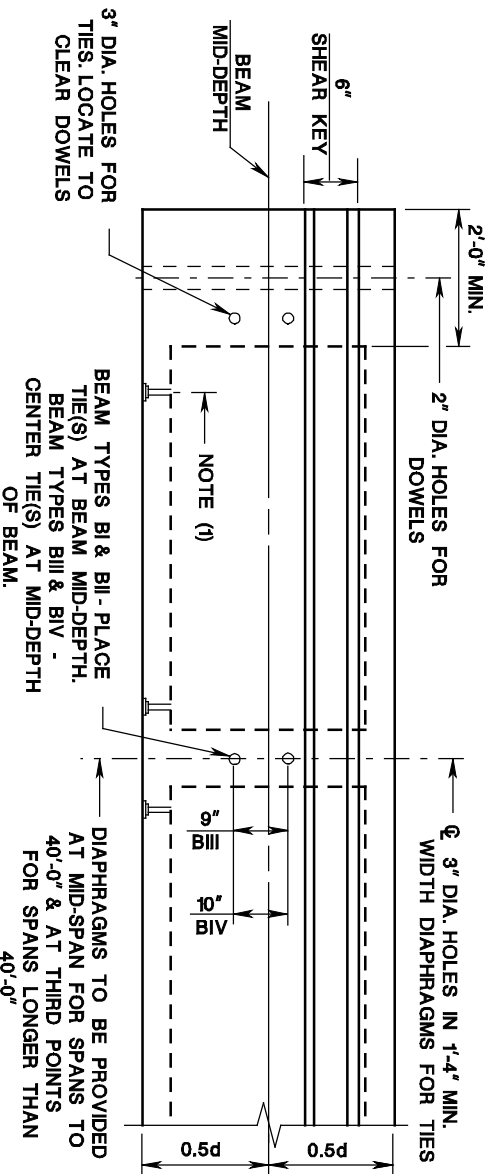


TYPICAL BOX BEAM SECTION

NOTE: KEYWAYS SHALL BE
FILLED WITH GROUT IN
ACCORDANCE WITH
1.25.6.1.b.



TYPICAL KEYWAY DETAIL
(OMIT ON OUTSIDE FACE OF
FASCIA BEAM)



TYPICAL BOX BEAM ELEVATION

TYPICAL SECTION PROPERTIES								
TYPE	WIDTH (FT)	DEPTH (IN)	WEIGHT (LBS./FT)	NET AREA (IN ²)	I _x (IN ⁴)	Y _b (IN)	S _b (IN ³)	S _t (IN ³)
BI-36	3	27	584	561	50,334	13.35	3770	3687
BII-36	3	33	647	621	85,153	16.29	5227	5096
BIV-36	3	39	709	681	131,145	19.25	6813	6640
BIII-36	3	42	740	711	158,644	20.73	7653	7459
BI-48	4	27	722	693	65,941	13.37	4932	4838
BII-48	4	33	784	753	110,499	16.33	6767	6629
BIII-48	4	39	847	813	166,367	19.29	8728	8542
BIV-48	4	42	878	843	203,088	20.78	9773	9571

NOTE (1): 1" ID NON-METALLIC VOID DRAINING DEVICE.
BOTH ENDS OF EACH VOID (TYPICAL), LOCATE
TO CLEAR STRANDS AND AT LOWEST ELEVATION. } NOTE AND TYPICAL LOCATION TO
BE SHOWN ON CONTRACT PLANS.
VERIFY ON SHOP PLANS ACCORDINGLY.